



918.237.4400

2448 E. 81st Street
Suite 456
Tulsa, OK 74137



MSP PARTNER PROGRAM

COLOCATION SERVICES

MSP Colocation Partners

DATA3 offers a complete suite of private label data center services for our MSP partners at wholesale prices. You have **complete control** over retail pricing. We offer a comprehensive private-label relationship that provides world-class facilities, power, connectivity, and support services to the Managed Service Provider (MSP) industry to you.

We help you keep your I.T. systems running so **You** can focus on running your business.

WWW.DATATHREE.COM

The Program Goals



- To provide a significant means of enhancing your offering in a transitioning industry, which is quickly moving to cloud-based services.
- Assist MSP organizations in their quest to provide a comprehensive set of services to their customers, thereby maintaining control over all aspects of the relationship.
- Assist MSPs in broadening their brand and scope of services to enable future capacity and growth.
- Provide MSPs an on-going stream of revenue through a private-label relationship with DATA 3.

How The Program Works?

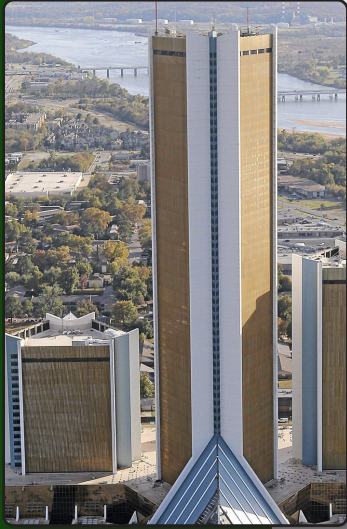


- The MSP can now market new services under their brand through our exclusive private-label program.
- DATA 3 provides sales and marketing support.
- The MSP purchases services needed for their clients under our wholesale pricing program. The MSP sets their own retail prices.
- The MSP provides Tier 1 support with their staff, which can be escalated to DATA 3. The MSP can choose from Data 3 provided support plans providing basic to comprehensive service levels.

Key Features Summary

- **18,000** Sq. ft. of datacenter space
- Host up to **350** racks
- **EF4+** rated facility
- **A+B** Power to racks
- **99.99999** Uptime
- Multiple ISPs
- NOC Services
- Alerts & Notifications
- Multiple generators
- **30,000** gallons of on-site backup fuel
- **Carrier-Neutral** Facility
- **24/7** On-premise security

Our Facility



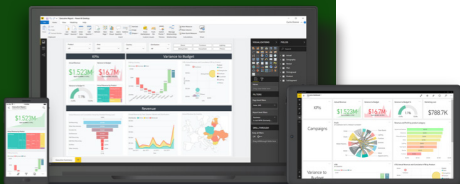
- Single pour concrete and steel reinforced structure
- EF4+ rated (winds 207 – 260 miles per hour)
- Switched Utility Power from 2 external substation feeds
- Ample parking, loading dock, freight elevators
- 24/7/365 unescorted secure access to the data centers
- Surveillance cameras throughout the facility
- 18,000 Sq. feet of raised floor datacenter space
- Two-factor biometric access / Two-factor card access
- No exterior walls or windows
- Clean agent waterless fire suppressant system
- 30,000 gallons of on-site generator fuel
- N+2 Power
- 20,000+ Sq. feet of Disaster Recovery / BCP space

Multiple ISPs (Bandwidth Providers)



- Carrier-Neutral colocation facility
- BGP4 routing
- Redundant infrastructure (routers, firewalls, etc.)
- Direct access to D-Marc
- No local loop charges
- Fiber connection available to any floor

Alerts & Notification



- Network and system-resource monitoring
- Temperature and humidity threshold breach alerts
- Alerts via email and SMS to multiple respondents
- Automatic Transfer Switch trigger alerts
- Weekly generator test run alerts
- Building maintenance notifications
- 24 / 7 Environmental monitoring with Room Alert

Datacenter Security



- On-premise 24 / 7 / 365 security
- On-site security cameras
- Secure card access
- Biometrics + Card Readers
- Caged / lockable racks
- Datacenter environment monitoring tied to building security
- Datacenter audit logs
- Video retention